

Beautiful Butleigh



In our first whole school topic we will be learning about our local school and village to produce some posters, leaflets and fact files to answer the question:

Why is Butleigh a special village?

Foundation Stage

We will be focusing on **'Our class is our family'** as we settle into school. We will be sharing knowledge about our likes and dislikes, our family and how we are the same and different.

We will be focusing on how we keep ourselves healthy, learning about our school and our local community as well as keeping ourselves safe in a wide range of contexts.

In Key Stage One

In **History** we will find out about the key buildings in the village including the school and how they have changed over time.

In **Geography** we will be learning about the local area and the key geographical features in and around Butleigh.

In **art** we will be looking at the work of Lowry and using his drawing style to copy and create our own pictures focusing on line and shape.

In **English** we will be basing our writing on the traditional tale 'Goldilocks and the Three Bears' and 'You Choose'. We will produce some non-fiction writing about Butleigh using the information we have found out in our topic work.

In **science** we will be learning about the weather and how the seasons change.

In **PE** we will be learning practising attacking and defending skills while playing netball.

In **French** we will learn some basic words and phrases.

In **computing** we learn about using a computer safely and be able open, save a document.

Planned experience and outcomes.

Drawing pictures of the village

Local walks to the church, park, river, and the woods

Making leaflets, posters about the history of the village

Butleigh visitor's exhibition where we will be inviting local and parents into see our exhibition about the village.

Personal Development

We are focusing on forming healthy relationships build on trust and respect in our new classes. We will be talking about different emotions and how they make us feel.

We will be also focusing on how we work together using empathy, cooperation, negotiation, and kindness.

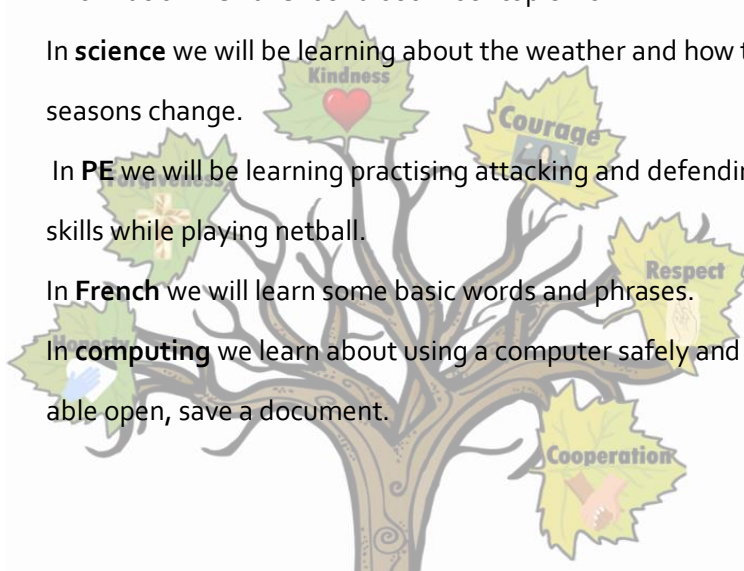


Be safe. Be respectful. Be kind. Be ready.

Links to our vision and values

We will be learning how we can look after our village and make a positive contribution.

We will think about how we can be safe in school and when we are walking around the village.



Key Stage Two

In **History** we will find out about the key buildings in the village including the school and how they have changed over time.

In **Geography** we will be learning about the local area and the

In **art** we will be looking at the work of Lowry and using their drawing style to copy and create our own pictures with a focus on line and shape.

In **English** we will be basing our writing on Darwin's Dragon's by Lindsay Galvin and the Somerset Folk Tales for Children by Sharon Jacksties as well producing some non-fiction writing about Butleigh using the information we have found out in our topic work.

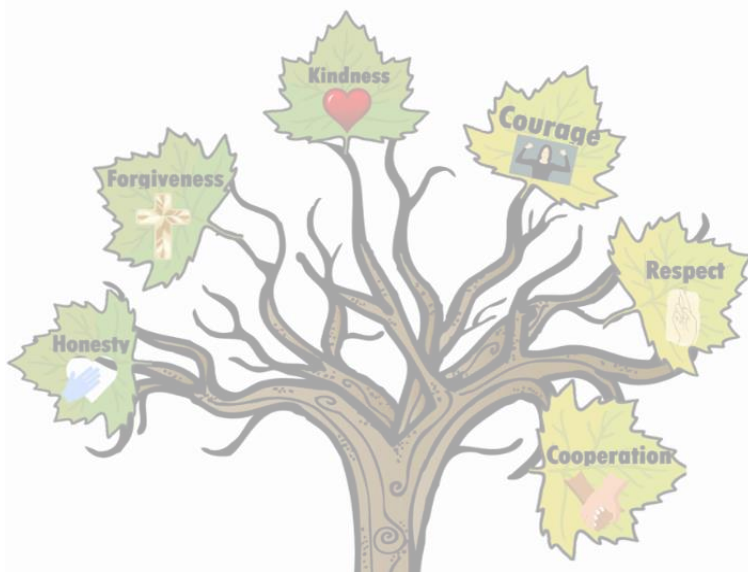
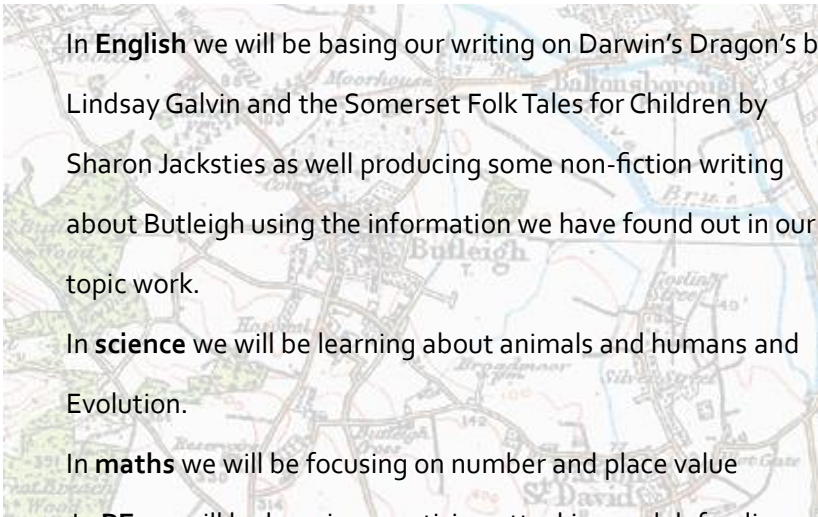
In **science** we will be learning about animals and humans and Evolution.

In **maths** we will be focusing on number and place value

In **PE** we will be learning practising attacking and defending skills while playing netball.

In **French** we will learning how to greet each other in different ways.

In **computing** we will learn how to design a website and using Various programs to create digital music.



Our half term focus-Aspire to be your best self.

This half term we will be focusing on our readiness to learn specifically our presentation, including handwriting.

All children will be working through a range of handwriting and letter formation lessons and be ready to learn in all lessons.



Be safe. Be respectful. Be kind. Be ready.

Half term events and dates

Meet the teacher meeting **Wednesday 20th September from 4pm-5pm**

Butleigh exhibition- parents and local residents are welcome to attend on **Thursday 19th October**