

# **Welcome to Butleigh C of E Primary School**

Mr Kristin Moth-Headteacher

Mrs Shields-Class 1 Teacher

Mrs Earley- Teaching Assistant

TBC- Teaching Assistant

# Induction/settling in sessions

- **Settling in sessions-** Wednesday 5<sup>th</sup> July (we can collect from the nursery) and Thursday 13<sup>th</sup> July at 1:15pm
  - A member of staff will welcome the children into school on both days
- **Teddy Bears picnic** Tuesday 18<sup>th</sup> July at 1:15pm
  - Parents and children to have a picnic on the field with the Owls class.
  - Parents are welcome to come into the hall to meet representatives from the school
  - Children will be playing games with the EYFS team

# September starts

- **Monday 4<sup>th</sup> and Tuesday 5<sup>th</sup> September-INSET days**
- **Wednesday 6<sup>th</sup> September- AM only** (gates open at 8:50am- 12:15)
- **Thursday 7<sup>th</sup> September-AM only** (gates open at 8:50am- 12:15)
- **Friday 8<sup>th</sup> September AM only** (gates open at 8:50am- 12:15)
- **Monday 11<sup>th</sup> September AM and lunch** (gates open at 8:50am- -1:15pm)
- **Tuesday 12<sup>th</sup> September AM and lunch** (gates open at 8:50am- -1:15pm)
- **Wednesday 13<sup>th</sup> September AM and lunch**(gates open at 8:50am-1:15pm)
- **Thursday 14<sup>th</sup> September Full time** (gates open at 8:50am-3:30pm)
- **Friday 15<sup>th</sup> September Full time** (gates open at 8:50am- 3:30pm)

# School vision and values

## Butleigh Brilliance



Be safe



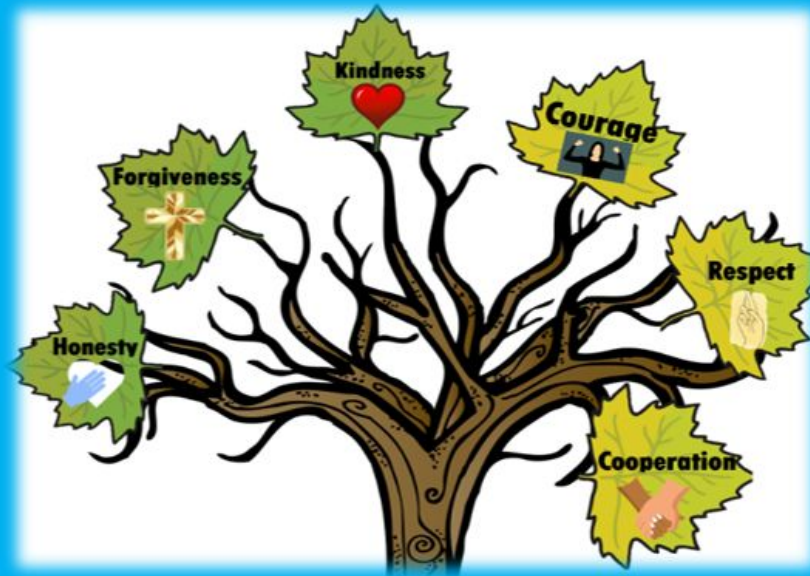
Be respectful



Be kind



Be ready



Aspire to be your best self by **living, learning**  
and **growing together** in God's love

# Our school community

**Headteacher/Designated Safeguarding Lead**-Mrs Moth

**Office Staff**-Mrs Williams and Mrs Hodge

**SENCo**-Mrs Shields

**Teaching staff**-Mrs Shields, Mrs Mullen, Teacher TBC, Mr North ( 1 day) and Mrs Wilkins (2 days)

**TA staff**-Mrs Earley, Mrs Cox, Mrs Greene, Mrs Higdon, Mrs Nicholls, Mrs Pitman

**Cleaner and Caretaker**-Mrs Mitchell

**Lavender Kitchens**- supply our lunches, run by Abbie Cornfield. *You order lunch through Parentpay*

**Governors**- Sarah Goolden (Chair), Wendy Jenner (Vice Chair)- *see the website for more information*

**FBS-Friends of Butleigh School**-our parent association

**Class parent Reps**-*see the website for more information.*

# Communication

- **Class Dojo-** way of communicating with parents and to record our house points
- **Tapestry-** to show parents what your child is learning at school (year R only)
- **Weekly newsletter-** sent out via email every Friday

# Class organisation

- All children will be class 1 with Year 1 and some of Year 2
- Class 1's classroom will be at the top of the school in the new classroom
- Mrs Shields will be the full-time teacher.
- Mrs Wilkins, Part time teacher, will be in class on a Monday morning and all day on Tuesday
- We will have 2 TA's in class 1, Mrs Earley will be the full-time teaching assistant and another TA to be confirmed



# Daily Routine

- **8:50pm Doors open.**
  - Children will be greeted at the gate by Mrs Moth or another staff member
  - Parents can walk their children up to class 1
  - Encouraged to leave them at the classroom door
- **9:00am Registration**
- **9:10am Maths Input**
  - Learning activities and continuous provision, assembly and snack time
- **11:00am phonics input**
- **12:15-1:15 lunch time**
- **1:15-3:30pm Learning activities, continuous provision and story time**
- **3:30pm Home time**



# Attendance

- Being at school on time every day sets the children up ready for their learning
- If your child is sick, please telephone the office before 9am
- Unexplained absence will be marked as unauthorised.
- Appointments- send a copy of the appointment
- Holidays- you must let us know about any holidays booked in school time. Holiday forms are kept in the office
  - These will not be authorised unless it falls under a very small number of exceptional circumstances.

# Early Years Areas of learning and development

- There are seven areas of the learning and development that must shape education programmes in Early Years settings. All areas of learning and development are important and interconnected

## Communication and Language

*Listening*

*Attention and understanding*

*Speaking*

## Personal, social and Emotional development

*Self regulation*

*Managing self*

*Building relationships*

## Physical development

**Gross motor skills-** *skill involving movements of the large muscles of the arms, legs and torso*

**Fine motor skills-** *skills involving movements of the small muscles in our hands and wrists*



## Expressive arts and Design

*Creating with materials*

*Being imaginative and expressive*

## Understanding of the world

*Past and present*

*People, culture and communities*

*The natural world*

## Literacy

*Comprehension*

*Word reading*

*Writing*

## Maths

*Number*

*Number patterns*



# Things to bring to school

- Water bottle filled with water
- Free school meals/lunchbox
- Bookbag from FBS
- Snacks and milk are provided
  - If you choose to bring a healthy snack it needs to be one item.
- Reading books (when given)
- PE days
- Forest school/Swimming kits (from after half term)

# Learning through Forest School

- We incorporate all aspects of the Early Years curriculum at Forest School
- We listen to and retell stories as well as having opportunities to create stories
- We do lots of maths activities to do with number, shape and measure in particular
- We learn to work together, to risk take (safely!) and to overcome anxieties



# Uniform

School uniform and PE kits can be bought from

Grey skirt, grey dress, grey trousers

- White or blue polo shirt
- School cardigan or sweatshirt or a plain navy sweatshirt
- Black shoes not trainers (no laces), grey or white socks or tights
- **Summer:** Grey shorts or blue and white checked dress optional
- Red book bag- **which will be given to each child at their settling in session for the FBS**

## PE

- Blue T shirt with a school logo
- Blue shorts, tracksuit bottoms or leggings
- Trainers
- Our FBS have lots of 2nd hand uniform so please ask!
- **PLEASE NAME ALL UNIFORM, SHOES AND PE KIT!**



# Being ready for school-what does this mean?

- Be able to separate from a parent/carer
- Listen with attention to a story
- Play with a group of toys independently for an extended period of time
- Express what they want or need (toilet, snack, tissue)
- Say please and thank you
- Take turns with adults or peers with a toy of when playing a game
- Put on and off your coat, socks and uniform (for PE and forest school session)
- BUT-remember that each child is different and we will work with each individual from their starting point



# Breakfast and after school club

- Opens at 8:00am until school starts
- Finish at 5:00pm Monday to Friday
- Lots of fun activities planned based on what the children want to do including outside activities, cooking, arts and crafts and sporting activities.
- Provide a healthy snack
  - £4 Breakfast club
  - £7 until 5:00pm- collect a form from the office.

# Other information

- We will be arranging **reading and maths** parent sessions in September
- We listen **St Leonard's church** each week for our open the book service
- **Houses**- 3 houses called Maple, Ash and Apple- children will be put into a house when they join the school. Siblings are put in the same house.
- **Friends of Butleigh (FBS)** are very active and support the school with fundraising